

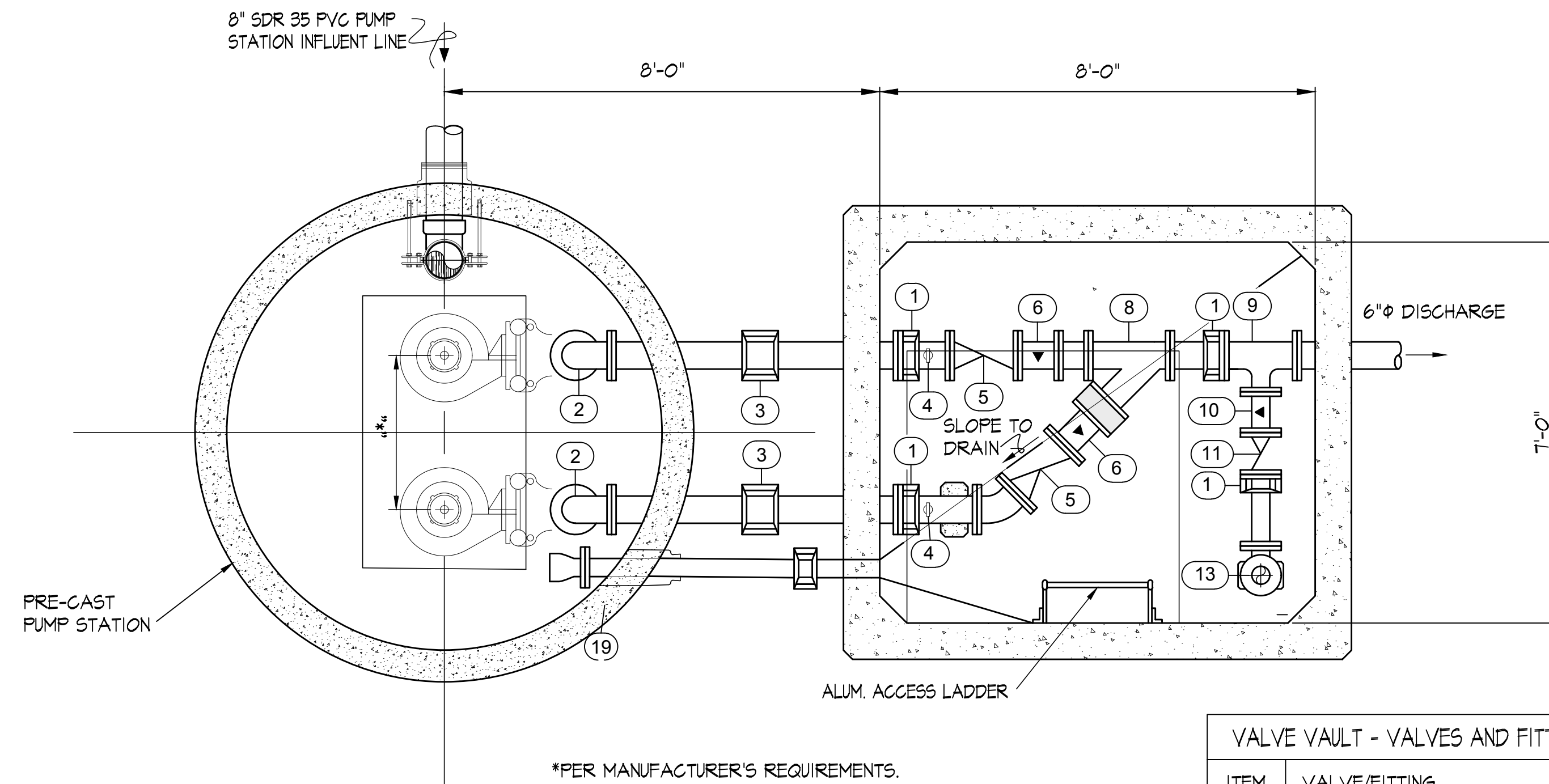
PUMP SCHEDULE

| PUMP STATION | GPM | T.D.H. | H.P. | R.P.M. | MINIMUM EFFICIENCY | POWER   | TYPE             |
|--------------|-----|--------|------|--------|--------------------|---------|------------------|
| NO. 1        | 120 | 36     | 5    | 1750   | 50                 | 240/460 | SUBMERSIBLE PUMP |

| PUMP STATION DIAMETER | TOP / SLAB ELEVATION | GROUND ELEVATION | ALARM ELEVATION | LAG PUMP ON ELEVATION | LEAD PUMP ON ELEVATION | PUMPS OFF ELEVATION | BOTTOM SLAB ELEVATION | TYPE             |
|-----------------------|----------------------|------------------|-----------------|-----------------------|------------------------|---------------------|-----------------------|------------------|
| 8'-0"                 | 1100.0               | 1099.50          | 1088.75         | 1088.00               | 1087.25                | 1086.50             | 1085.00               | SUBMERSIBLE PUMP |

NOTE:  
STAINLESS STEEL JUNCTION BOX W/ INTEGRAL TERMINAL BOARD FOR PUMP CONNECTIONS AND FLOAT CONNECTIONS SHALL BE MOUNTED ON THE METWELL. A STAINLESS STEEL CONTROL PANEL SHALL BE MOUNTED ON THE VALVE VAULT. FEDESTALS OF JUNCTION BOX AND VALVE VAULT SHALL BE OF STAINLESS STEEL WITH ADEQUATE ROOM FOR ALL CABLES AND CONNECTORS. FEDESTALS SHALL HAVE AN ACCESS PANEL SIZED TO ALLOW AMPLE ACCESS TO ALL CABLE CONNECTORS. "DO NOT PAINT."

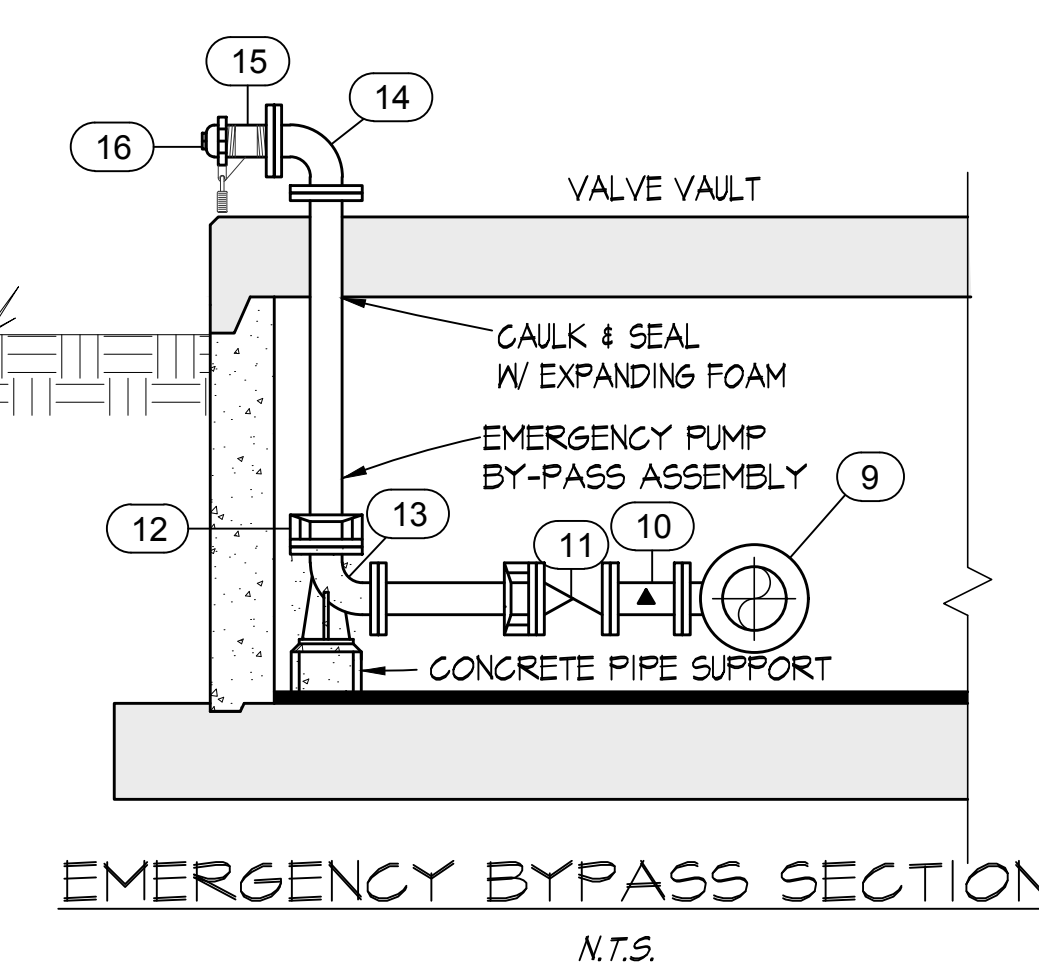
NOTE:  
ALL FASTENERS INCLUDING BOLTS, NUTS, OTHER METALS (EXCEPT PIPE), IN/ON MET WELL & VALVE VAULT TO BE STAINLESS STEEL.



LOWER PLAN - PUMP STATION  
SCALE: 1/2"=1'-0"

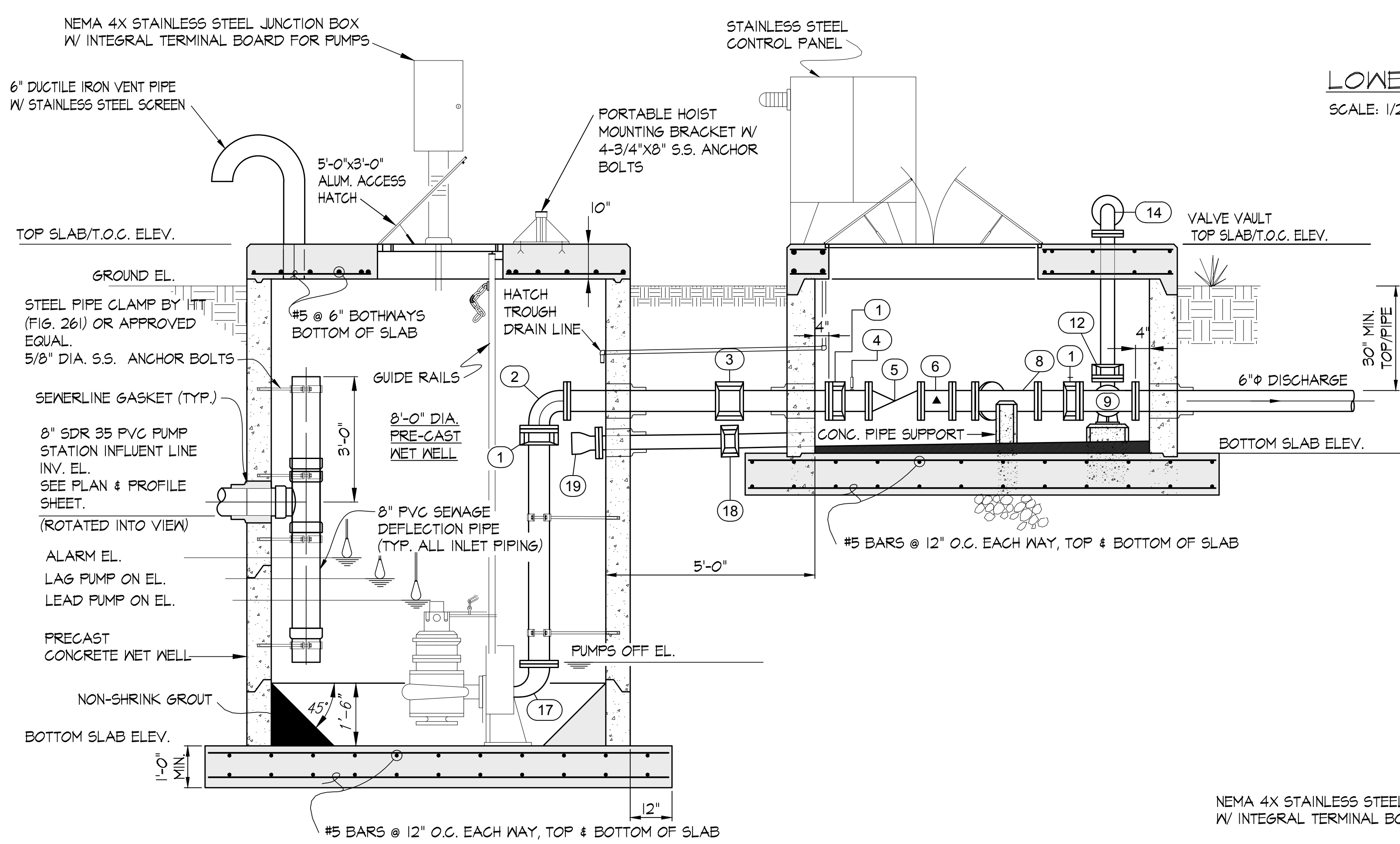
VALVE VAULT - VALVES AND FITTING SUMMARY

| ITEM | VALVE/FITTING   |
|------|---|
| 1    | 6" D.I. FLG. COUPLING ADAPTER                                 |
| 2    | 6" D.I. FLG. 90° ELL  |
| 3    | 6" STRAIGHT COUPLING ADAPTER                                  |
| 4    | PRESSURE GAUGE & GAUGE COCK                                   |
| 5    | 6" C.I. FLG. CHECK VALVE                                      |
| 6    | 6" C.I. FLG. PLUG VALVE                                       |
| 7    | 6" D.I. FLG. 45° BEND   |
| 8    | 6"x6" D.I. FLG. "WYE"   |
| 9    | 6"x6"x4" D.I. FLG. "TEE"                                      |
| 10   | 4" C.I. FLG. PLUG VALVE                                       |
| 11   | 4" C.I. FLG. CHECK VALVE                                      |
| 12   | 4" D.I. FLG. COUPLING ADAPTER                                 |
| 13   | 4" D.I. FLG. BASE ELL   |
| 14   | 4" D.I. FLG. 90° ELL  |
| 15   | 4" COMPANION FLANGE   |
| 16   | 4"-QUICK-CONNECT" FITTING W/ CAP                              |
| 17   | D.I. FLG. ECCENTRIC REDUCER (AS REQUIRED BY PUMP MANUFACTURE) |
| 18   | 4" STRAIGHT COUPLING ADAPTER                                  |
| 19   | 4" FLANGED CHECK VALVE BY TIDEFLEX "SERIES 35" OR EQUAL       |
| 20   | 4" D.I.M.J. 90° ELL   |



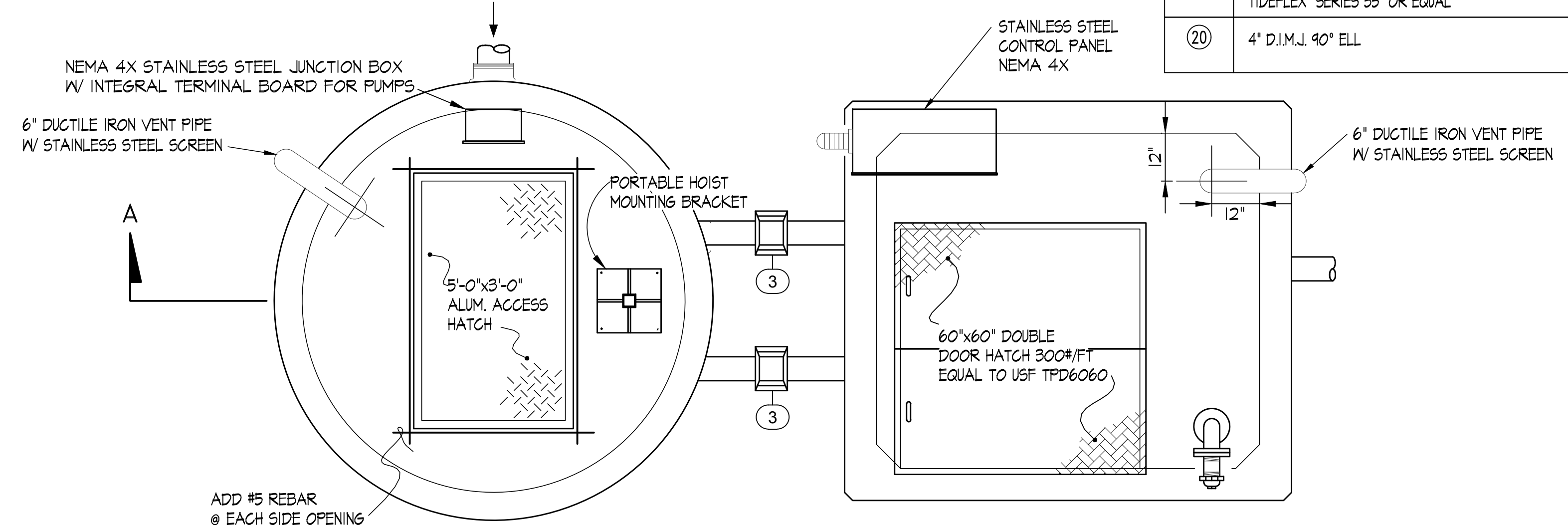
EMERGENCY BYPASS SECTION  
N.T.S.

NOTE:  
ALUM. ACCESS HATCH AND PORTABLE HOIST MOUNTING BRACKET, FOR PUMP REMOVABLE, SHALL BE LOCATED PER PUMP MANUFACTURE'S RECOMMENDATIONS.



PUMP STATION SECTION  
SCALE: 1/2"=1'-0"

- NOTE:
- TIE-IN TO PUMP STATION OPENINGS W/ RUBBER GASKETS & CLAMPS, TYPE PSX AS MANUFACTURED BY PRESS SEAL GASKET CO. OR EQUAL. PACK GASKET WITH NON-SHRINK GROUT & FINISH SUCH THAT GROUT IS FLUSH WITH INSIDE WALL OF MET WELL & VALVE VAULT. TYPICAL ALL OPENINGS.
  - CONTRACTOR SHALL CONFIRM ANGLE OF PIPE ENTRANCE TO PUMP STATION BEFORE ORDERING MET WELL SECTIONS.
  - LOCATE GUIDE RAILS, UPPER GUIDE BRACKET, CABLE HOLDER & ALUM. ACCESS HATCH AS REQUIRED BY PUMPS & EQUIPMENT DIMENSIONS.
  - COAT OUTSIDE OF MET WELL AND VALVE VAULT WITH BITUMINOUS WATER PROOFING AS PER MANHOLE STANDARD DETAIL. TWO BANDS OF CONSEAL ARE TO BE USED @ JOINTS AND JOINTS ARE TO BE GROUTED.
  - ALL PIPING SHOWN IN AND BETWEEN THE MET WELL AND VALVE VAULT ARE TO BE DUCTILE IRON PIPES, UNLESS SHOWN OTHERWISE.
  - PUMP STATION AND VALVE VAULT SHALL BE EQUIPED W/ APPROVED FLYGT SAFE-HATCH ACCESS COVER FOR FALL PROTECTION AS MANUFACTURED BY XYLEM OR APPROVED EQUAL.



UPPER PLAN - PUMP STATION  
SCALE: 1/2"=1'-0"

PLAN & DETAILS - PUMP STATION

WATER, SEWER AND ACCESS ROAD EXTENSIONS  
GRACE CLINIC PROJECT  
SOUTHEAST KENTUCKY  
INDUSTRIAL DEVELOPMENT  
AUTHORITY  
KNOX COUNTY, KENTUCKY

| PROJECT NO. | DESIGNED BY | DIST.       |
|-------------|-------------|-------------|
| 2069-45     |             |             |
| DRAWN BY    | CHECKED BY  | DIST.       |
| 6MS         |             |             |
| REVIEWED BY | DIST.       | DATE        |
|             |             | AUG/25/2016 |
| SCALE       | AS NOTED    |             |

Engineers  
Architects  
Planners

624 Wellington Way  
Bowling Green, KY 40303  
www.mseinc.com

Phone: (606) 223-5684  
Fax: (606) 223-2607